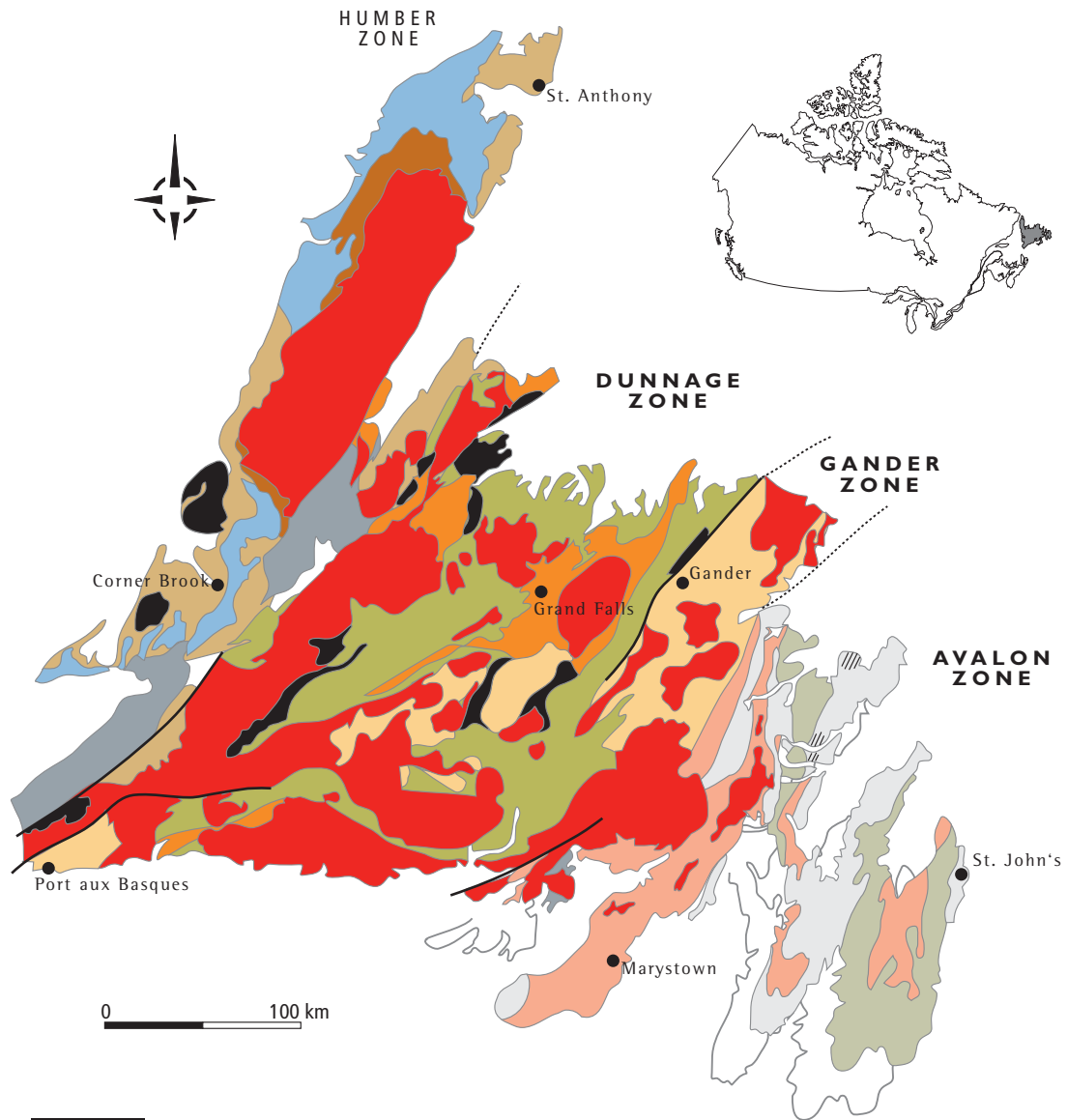


SIMPLIFIED GEOLOGICAL MAP OF NEUFUNDLAND



LEGEND

AVALON ZONE

PROTEROZOIC TO ORDOVICIAN
Subaerial and marine clastic sedimentary rocks, minor limestone

PROTEROZOIC
marine and deltaic clastic sedimentary rocks

PROTEROZOIC
Mafic and felsic volcanic and volcanoclastic rocks

DUNNAGE ZONE

CAMBRIAN TO SILURIAN
Marine clastic sedimentary, island-arc volcanic rocks, volcanoclastic rocks

CAMBRIAN TO ORDOVICIAN
Ophiolitic mafic-ultramafic rocks, pillow lava

GANDER ZONE

CAMBRIAN TO ORDOVICIAN
Clastic metasedimentary rocks and migmatic equivalents

HUMBER ZONE

PROTEROZOIC TO ORDOVICIAN
Autochthonous and paraautochthonous clastic and metasedimentary rocks

PROTEROZOIC TO ORDOVICIAN
Platformal limestones and dolostones, includes clastic metasedimentary rocks

PROTEROZOIC TO ORDOVICIAN
Basal clastic and carbonate sedimentary rocks, includes mafic volcanic rocks

DEVONIAN TO CARBONIFEROUS
Subaerial, lacustrine fluvial and deltaic clastic sedimentary rocks, minor limestone

SILURIAN
Shallow marine and subaerial clastic sedimentary rocks, minor limestone volcanic rocks, volcanoclastic rocks

PROTEROZOIC TO DEVONIAN
Plutonic Rocks

slate