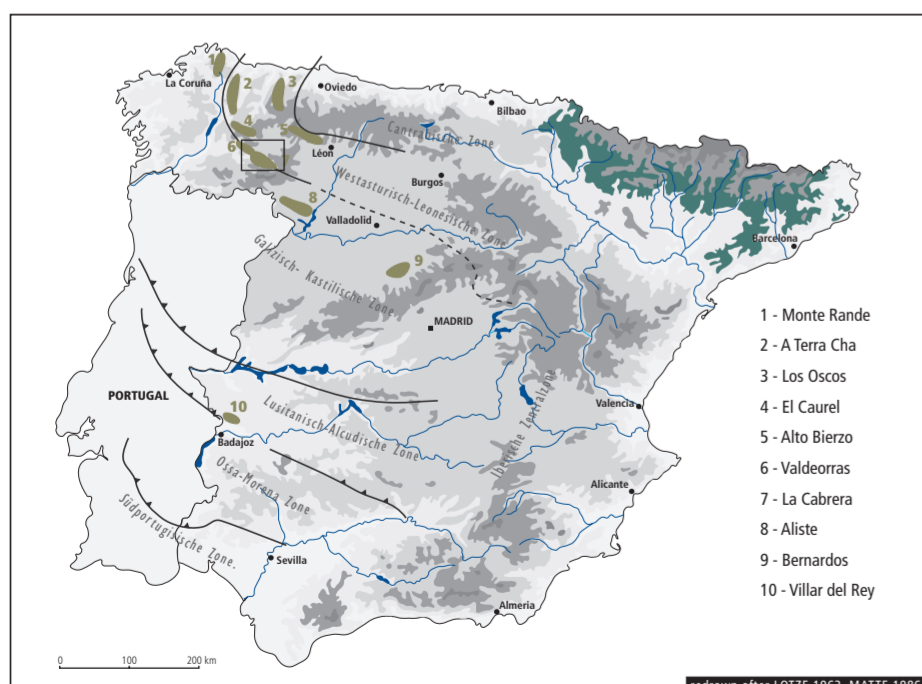


Geological Map and Position of Slate Quarries

Cenozoic	K	K	conglomerates, glaciogenous shales, quartzite ...	
Silurian	S	S	black slates, pyrite-rich slates with graptolites	
ORDOVICIAN	Upper-	O ₂₂₋₃	O ₂₂₋₃	slates and quartzites (Agüeira Formation)
		O _{2,3}	O _{2,3}	black slates and sandstones
		O ₃	O ₃	slates and sandstones
	Middle-	O ₂₁₋₂₂	O ₂₁₋₂₂	(Luarca Formation)
		O ₁₂₋₂₁	O ₁₂₋₂₁	quartzites, slates and sandstones
	Lower-	O ₁₂	O ₁₂	white quartzites (Cuarcito Amoricano)
		O ₁₁₋₁₂	O ₁₁₋₁₂	slates, quartzites, Quarzitbanke
		O _{1,2}	O _{1,2}	quartzites, slates
	Cambrian	Ca-O	Ca-O	quartzites, slates, sandstones (Serie de los Cabos)
		Ca	Ca	arenites, slates and feldspar-rich sandstones (Candana-Herreria Formation)
	M	M	magmatic and metamorphic rocks	

- fault
- ▲▲▲ thrust
- county borders
- ⚡ quarries (active)
- ⚡ Gavima (not active)
- Villages

0 5 km



- 1 - Monte Rande
- 2 - A Terra Cha
- 3 - Los Oscos
- 4 - El Caurel
- 5 - Alto Bierzo
- 6 - Valdeorras
- 7 - La Cabrera
- 8 - Aliste
- 9 - Bernardos
- 10 - Villar del Rey

Iberian Variscan and belonging slate regions

(generalized geological maps/source: Mapa Geológico de España (1978) : Blätter 156-158, 189-191, 229 - Segunda Serie, Primera edición, Escala 1:50.000, Ministerio de Industria y Energía, Madrid.)
Anmerkung: This map is supposed to be used only for educational purpose and thus may not be reproduced in any form or by any means.

Jörn Wichert, Geologist (2005)