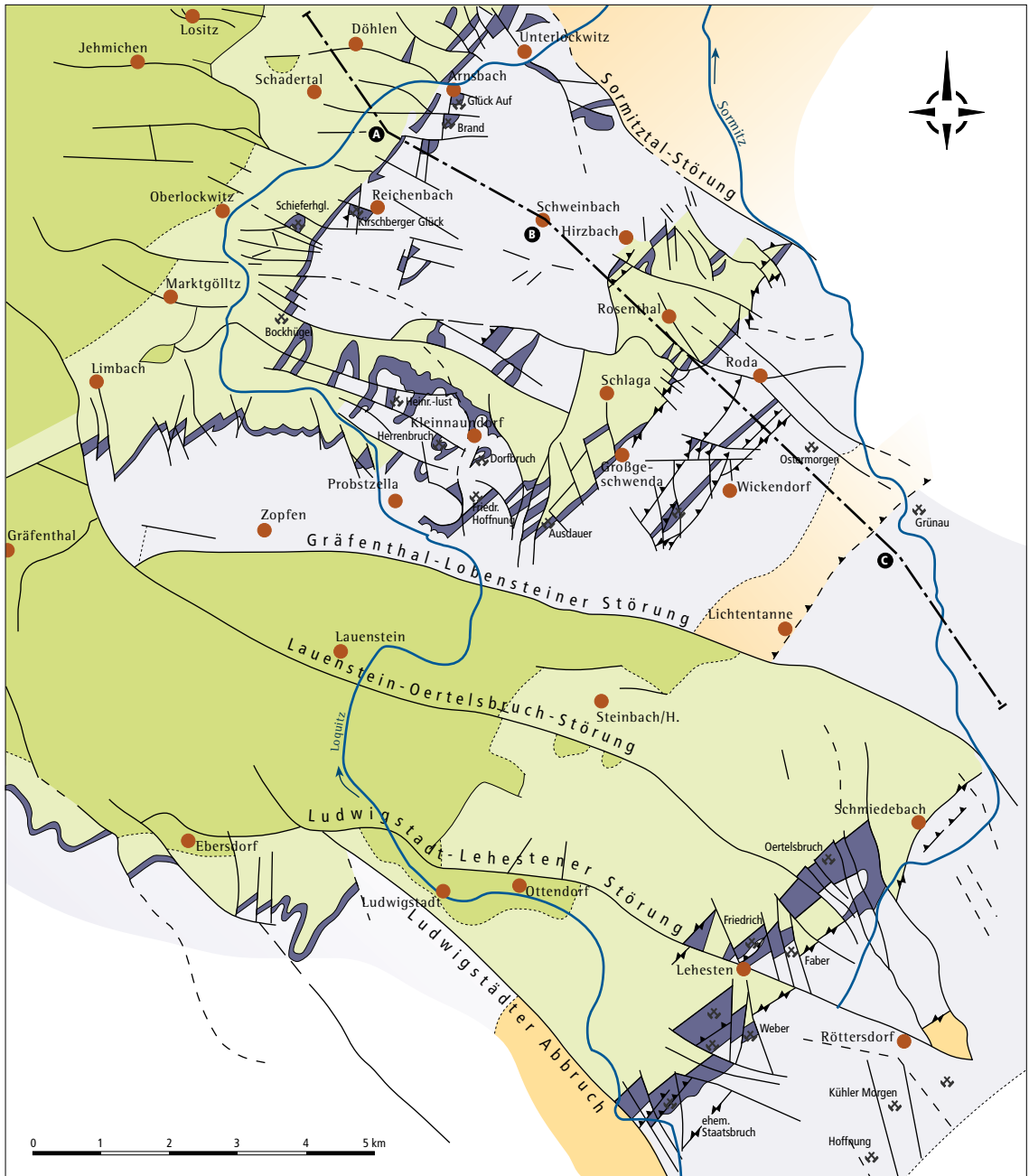

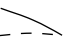








TEKTONISCHE KARTE DES THÜRINGER SCHIEFERGEBIETES

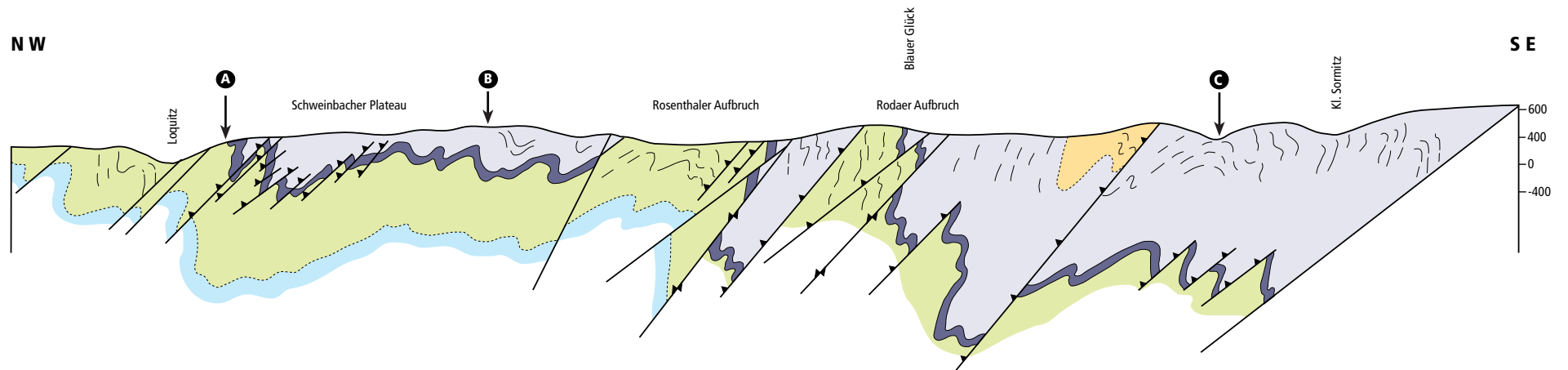


LEGENDE

- | | |
|---|---|
|  Oberkulm |  Quer- und Diagonalstörung (sicher und vermutet) |
|  Unterkulm mit Dach- und Rußschiefer |  Unterverschiebung (Schwarte) |
|  Devon und Unter-Tournai |  Auf- bzw. Überschiebung |
|  Prädevon |  Schieferabbau (stillgelegt, aktiv) |



QUERPROFIL DURCH DAS THÜRINGER DACHSCHIEFERREVIER



LEGENDE



Quelle: Vulpius, nach R. Schubert 1976
Dipl.-Geol. Jörn Wichert (2004)