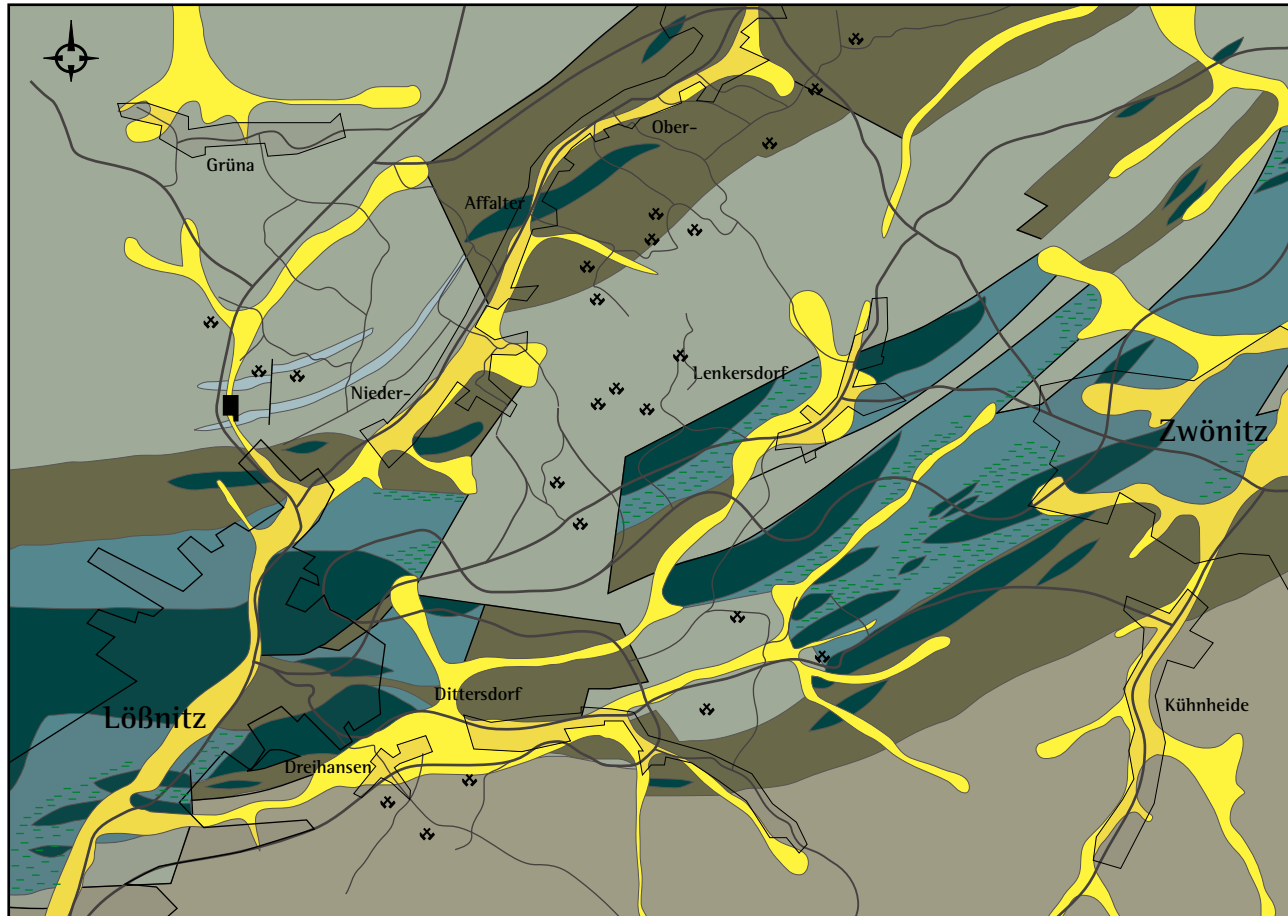











# VEREINFACHTE GEOLOGISCHE KARTE VON LÖBNITZ-ZWÖNITZ



**LEGENDE**

-  Känozoikum
-  Hornblendeschiefer
-  Tonschieferähnlich bis glimmerig-phyllitische Schiefer
-  Phyllitische Schiefer und Hornblendeschiefer wechsellagernd
-  Tonschieferähnliche bis glimmerig-phyllitische Schiefer
-  Zonen mit dunklen Phylliten, z.T. mit hellen Phylliten wechsellagernd
-  Glimmerige, lichte Phyllite
-  chloritische Hornblendeschiefer
-  stillgelegte Schiefergruben

0 2 km

Quelle: Geol. Karte „Sektion Löbnitz-Zwönitz“, No 126, 1:25.000; Topograph. Karte, 1:25.000